



2022

# IMPACT REPORT

---



# 2022 AT A GLANCE

**500+**

nutritional & medical consultations to children under 5

**775 (97%)**

of scholarship students completed their year successfully

**8500+**

hours of vocational & entrepreneurship training received by participants, 80% in Kaqchikel

**50+**

individuals involved in launching 5 community enterprises using Natün microcredits

**15000+**

community members reached

**300**

school meals provided to children under 5 as part of 2-month pilot

**43000+**

hours of bilingual Spanish-Kaqchikel instruction received by preschoolers

**1100+**

tutoring hours delivered to 160 students, with 70% improving grades

**1600+**

food support parcels delivered to families

**50+**

collaboration agreements with institutions, and organizations

# 2022

was a transformational year for Natün, and we have **set the bar high for future years**. Our success in innovating our programs and momentum in 2022 will be carried into our future activities. We are unwavering in fulfilling our mission and doing it in the right way: Maya-led and community-driven development.

Guided by our organizational values of **cooperation, integrity, transparency, respect, humility, accountability, and reciprocity**, we carry out our work in a meaningful, **sustainable**, and **impactful** way for partner communities and future generations of Guatemala. Having **local Indigenous staff leading our team** and managing programs is one of our greatest strengths at Natün. We take immense pride in the invaluable knowledge, perspective, and expertise brought to our work in this way.

In 2020, Natün developed a five-year strategic plan, and we are incredibly proud of the **significant progress toward our ambitious medium- and long-term goals**. We have taken great strides to ensure our programs have a positive impact that benefits all members of partner communities and the **future generations** of Guatemala. Through centering **local Indigenous leadership**, we are proud of our success in building powerful **inter-institutional collaborations to collectively multiply our impact**, and further developing our **intentional, holistic programs based on community strengths** for long-term transformation.

This year, we saw the launch of the Entrepreneurship and Youth Leadership programs and the expansion of our nutrition focus, particularly focusing on the potential of family and community agriculture - which has already had a **positive impact thousands of community members**. Natün aims to complement existing resources, culture and strengths within the communities where we work. As we continue to work to fulfill our mission, we **continually learn with and from our partner communities**, adapt to their needs and strengths, and **grow together**.



*Thank you for being a part of this journey.*



# NUTRITION & HEALTH

Natün's Nutrition & Health department comprises four essential programs that address the critical health needs of vulnerable populations in rural communities around Lake Atitlán.

Our **Community Health** program serves as the backbone of our department, ensuring that community members have access to healthcare services, clean water, and food security. Our **Infant and Child Malnutrition** program (Growing Healthy) targets one of the most pressing health issues in the region and works to prevent malnutrition in children under five. Our **Women's Health** program is another vital component of our department, focusing on **maternal health** and **prenatal care** and ensuring that women of reproductive age have access to necessary recourses. Finally, our **Elderly Care** program supports the aging population in our communities and provides them with access to **essential health services** such as **physical therapy**, **medical consultations**, and **mental health** services.

The impact of our work goes beyond just these programs. The department is guided by two transversal themes: community and **family agriculture** and **nutrition**. These themes influence and guide our programs to generate **access to nutritional and medical services** with **cultural relevance**, reducing the impact of child malnutrition and **improving the quality of life of vulnerable populations**.

We are thrilled to share that our Nutrition & Health department made significant progress in 2022, planting and implementing almost **200 community and family gardens**, providing families with sustainable nutrition and **breaking the cycle of poverty**. Our team worked hand in hand with **190 Indigenous families** to cultivate five community learning gardens and 190 family gardens using only **organic, regenerative practices**. We are proud that our program is **rooted in Maya agricultural, environmental, and nutritional knowledge**, contributing to the resurgence of traditional knowledge.

Furthermore, we treated and **fully recovered 100%** of children found to have anemia, parasites, high concentrations of uric acid, or other infections. Our **Preschool Nutrition Centers** saw **62 students graduate**, supplied **300 meals** and snacks to students, and provided over **500 nutritional and medical consultations** to children under five.

Moreover, in a pilot program, we **trained 42 midwives** and **30 community health promoters** from the region, providing them with the **resources and information** they need to practice at their full potential and **serve their communities**. Midwives are the healthcare providers of choice in the communities where we work, but have been **historically excluded from the state healthcare system**. We are honored to support these talented healers and help them **develop their capacity and knowledge** of community leadership.

Looking forward, we are eager to **expand** our program to **over 250 family and community gardens**, train more midwives and community health promoters, and undertake **climate adaptation, water, sanitation, and hygiene projects** to increase our partner communities' overall health and sustainability.







# EDUCATION

Our Education department has deepened its work in 2022, with our programs making great strides towards **improving access to quality education** for rural communities while **preserving Indigenous Maya culture**.

In the **Seeds of Education** scholarship program, our holistic support model has **helped students who lack the resources to complete their studies**. In 2022, we supported **35 students to graduate high school** and **775 students successfully completed the school year**. We offered **65 students career/university orientations**, providing them with guidance and support in pursuing their dreams. Our **Seeds of Education** fund has also **helped local public schools** increase access to quality education for all students.

Natün's **university scholarship** recipients have also made a significant impact in their communities. In 2022, **25 scholarship recipients completed 2,500 hours of community service**, tutoring younger students and volunteering at health centers, libraries, and local government offices, providing much-needed support to their communities. Engaging in community service has not only aided students in **developing their leadership ability** but has also helped them comprehend the **importance of reciprocity**, one of Natün's core values.

The **Learning Communities** program continues to provide face-to-face tutoring to struggling students and, in 2022, provided **1176 tutoring hours**. In addition to student tutors, Natün has a team of **4 highly skilled teachers** that visit students and provide tutoring and mentorship to those who need extra support. We are proud to say that we have also provided **youth leadership workshops** to help youth participants develop leadership skills and **capacity building**, rooted firmly in **Maya cultural practices and values**.

Our **Preschool Nutrition Centers** have continued to provide **quality early education and nutrition** to children under 5 years of age; we have successfully prevented, identified, and treated malnutrition in all of our preschool students. The preschools operate in a **bilingual learning environment**, which develops students' Spanish skills while valuing and preserving their Maya language of Kaqchikel.

We are excited about the progress made by our Education department in 2022 by deeply connecting the components, and we look to expand on our success in the coming years. We are committed to continuing to develop programs that **prioritize Indigenous Maya traditions, culture, and communities** and provide access to quality education for all.





# ECONOMIC DEVELOPMENT

Our Economic Development department strives to promote professional and economic growth, **rooted in local knowledge and techniques**, and create more opportunities for income generation for families and communities, through **Entrepreneurship, Artisan, and Trade School** programs.

The **Trade School** program offers vocational training such as baking, computing, sewing, beadwork, and embroidery - skills relevant to our partner communities' needs and assets. Our courses help students **discover and enhance their abilities** and creativity to turn them into **income-generating skills**.

Our **Entrepreneurship** program offers **complementary courses** to participants interested in developing and increasing their knowledge in **small-business management, financial literacy** and responsibility, and **successful business models**, to be able to turn their new skills into income. We then provide **start-up financing** for small businesses to students who graduated from our **Entrepreneurship** training program.

In 2022, we advanced our short- and medium-term goals by **strengthening existing knowledge** and promoting **artisanal and traditional techniques** used in our partner communities. We provided training workshops to teach **business skills**, including **finance, economic planning, administration**, and small business start-up. This made steps towards our long-term goal of **promoting economic independence** within communities to **improve the quality of life** for families around Lake Atitlán.

Some of the department's key achievements in 2022 include involving over **50 community members in developing comprehensive business plans**, and providing over **8500 hours of vocational and entrepreneurship training** to participants **within one mile of their homes**, with 80% of students receiving instruction in Kaqchikel.

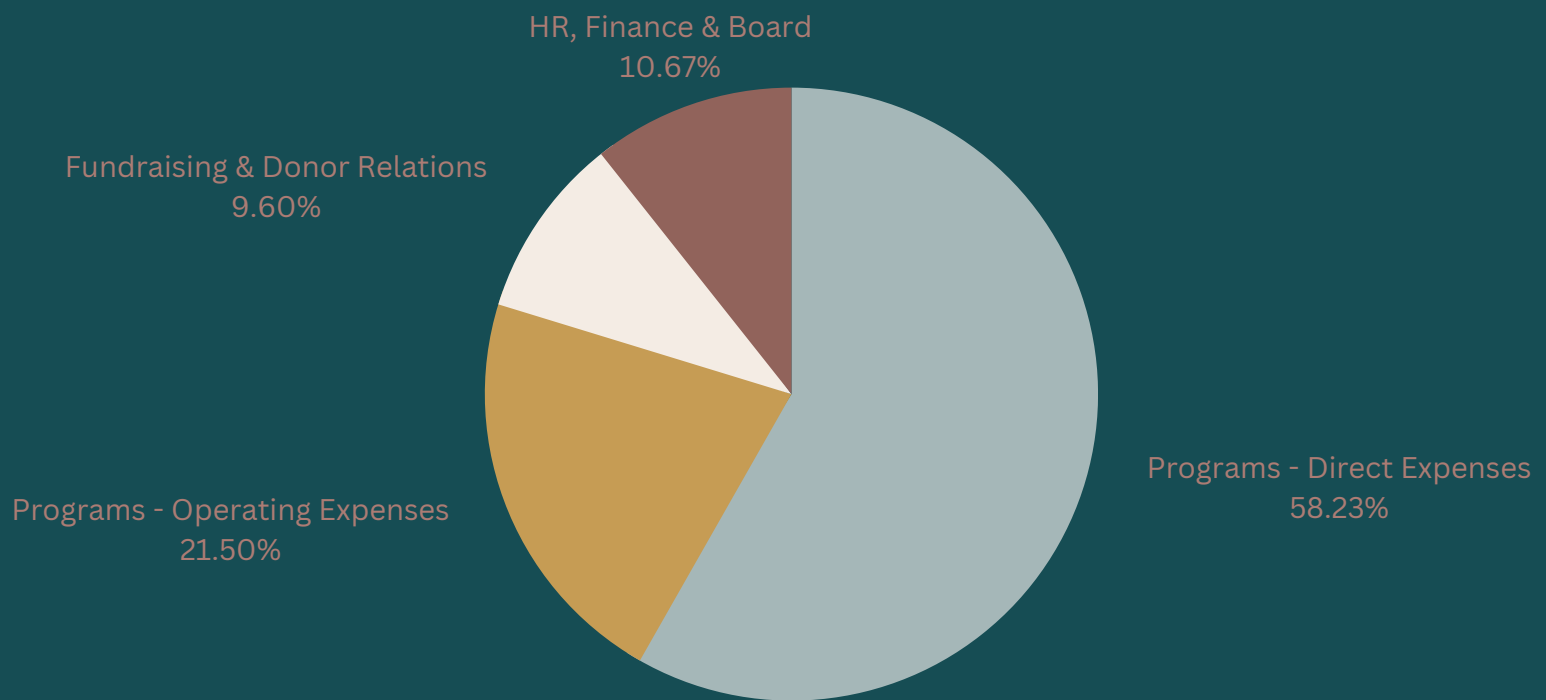
These achievements allow participants to develop income-generating skills and improve their economic independence. Graduates are well prepared to compete in their local market thanks to our **partnership with the Ministry of Education**, which awards graduates an **accredited diploma**.

As we look forward to 2023, we have set our sights on **expanding our programs** to more community members, **partnering with more rural communities**, and setting up **savings groups for women** to then invest in enterprises. Our goal is to provide more opportunities for income generation and financial independence, ultimately leading to better lives for the families we serve.





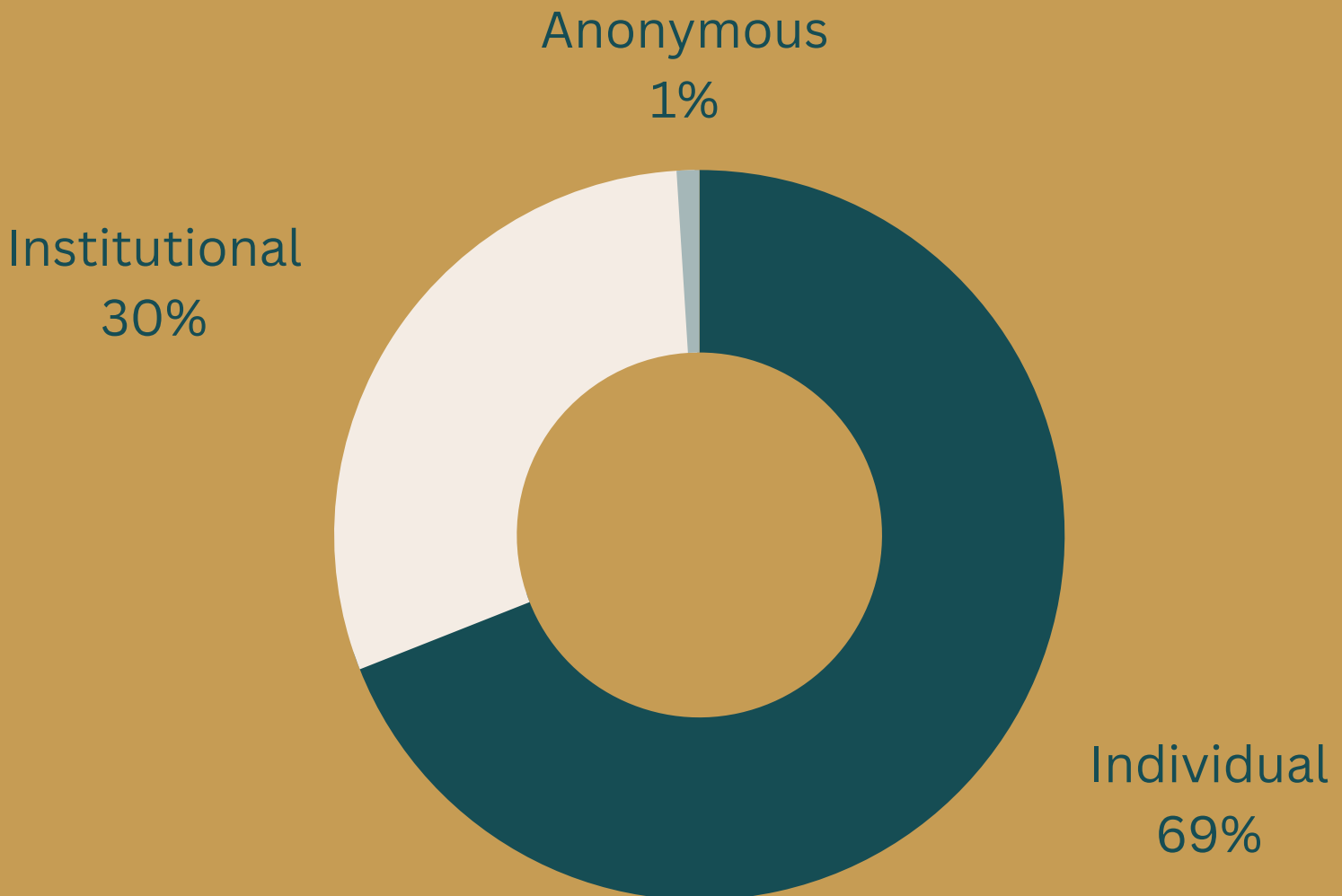
# OUR EXPENSES



Overall during 2022, 79.73% of our total expenses were associated directly with costs for our community-led programs. The remaining expenses were made up of organizational administration and fundraising costs.



# OUR FUNDING



Natün Guatemala is incredibly grateful to everyone that chooses to share their **time**, **talent** and/or **treasure** with us.

Our work would not be possible without the incredible generosity of thousands of **individual** and **institutional donors** or the commitment of some **remarkably talented professionals** that share their expertise with us free of charge.

If you would like to talk with someone about how to supporting us, whether financial or otherwise, our partnerships and fundraising team would love to hear from you.

Contact us at: [fundraising@natunguatemala.org](mailto:fundraising@natunguatemala.org).

# CONNECT



 [natunguatemala.org](https://www.natunguatemala.org)

 [natunguatemala](https://www.linkedin.com/company/natunguatemala)

 [@natunguatemala](https://www.instagram.com/natunguatemala)


 [@natunguatemala](https://www.youtube.com/channel/UC...)

A decorative background image showing several ears of corn in various colors (yellow, orange, blue) and a small wooden bowl filled with white corn kernels, set against a dark, textured surface.

# CONTACT

 [www.natunguatemala.org](https://www.natunguatemala.org)

 [info@natunguatemala.org](mailto:info@natunguatemala.org)

 **Asociación Natün:** Calle del Rastro, Panajachel  
+502 7762-0754

 **Natün Guatemala:** 1968 S Coast Hwy #1904 Laguna Beach CA 92651  
+1 619 550-2608